



General Certificate of Secondary Education
2025

Centre Number

--	--	--	--	--

Candidate Number

--	--	--	--

Agriculture and Land Use

Unit 2

Animals on the Land



[GAU21]

GAU21

MONDAY 16 JUNE, AFTERNOON

TIME

1 hour 15 minutes.

INSTRUCTIONS TO CANDIDATES

Write your Centre Number and Candidate Number in the spaces provided at the top of this page.

You must answer the questions in the spaces provided.

Do not write outside the boxed area on each page or on blank pages.

Complete questions in black ink and use a dark HB pencil for drawings and graphs.

Do not write with a gel pen.

Answer **all nine** questions.

INFORMATION FOR CANDIDATES

The total mark for this paper is 75.

Figures in brackets printed down the right-hand side of pages indicate the marks awarded to each question or part question.

You may use a scientific calculator.

Quality of written communication will be assessed in Questions **7** and **9**.

14516



20GAU2101

1 Farmers must check their animals' health regularly.



Source: Chief Examiner

(a) Use the photograph to assess the general health of the animal.

Circle your choice.

healthy

unhealthy

Give **two** reasons for your choice.

1. _____

2. _____ [3]

(b) State **two** of the basic freedoms of farm animals.

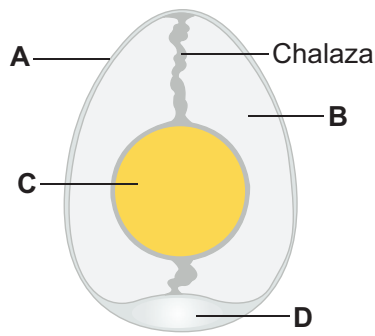
Freedom _____

Freedom _____

_____ [2]



2 The diagram shows a cross section through a hen's egg.



Source: CCEA

(a) Name the parts labelled **A**, **B**, **C** and **D** in the diagram above.

A _____

B _____

C _____

D _____

[4]

An incubator performs the role of a broody hen. It recreates the conditions for a healthy chick to develop.

(b) Using the words/numbers in the box below, complete the following statements about hens and their eggs.

15	agitate	dry	turn	21
cool	peck	humid	28	

For healthy chicks to hatch, the fertilised eggs need to be incubated for a period of _____ days. A hen will do this process by sitting on the eggs.

The hen keeps the eggs warm and _____. The hen will also _____ the eggs regularly with her beak to ensure the chicks develop properly.

[3]

[Turn over



BLANK PAGE
DO NOT WRITE ON THIS PAGE

14516



20GAU2104





3 Being part of a scheme such as the **Farm Quality Assurance Scheme** can bring many benefits to a farm business.

(a) (i) State **two requirements** the farmer must meet for participation in the Farm Quality Assurance Scheme.

1. _____

2. _____
_____ [2]

(ii) Give **two** benefits of participating in this scheme.

_____ [2]

(b) Name **one** other scheme which farmers may take part in.

_____ [1]



4 (a) (i) Define the term 'Dry Matter Intake' (DMI).

[2]

(ii) Explain why DMI is a useful measurement for farmers.

[1]

A suckler cow with a newborn calf requires a DMI of 14 kg each day.

(b) The suckler cow is grazing on fresh grass.

(i) How much grass will the cow need to eat each day if the grass has a dry matter (DM) of 18%?

Give your answer to the **nearest** kg.

Show your working out.

_____ kg/day [3]



(ii) What will happen to the cow if she eats less than her required DMI?

_____ [1]

(iii) Where will the **newborn calf** get most of its DM from?

_____ [1]

To help increase DMI, concentrates can also be fed to the suckler cow.

(c) Suggest **two** disadvantages of feeding high levels of concentrates to the grazing suckler cow.

1. _____

2. _____

_____ [2]

Minerals are important to help meet the suckler cow's other nutritional requirements.

(d) Give **one** example of a mineral and describe how it helps meet the suckler cow's nutritional requirements.

Mineral _____

Description _____

_____ [2]

[Turn over



5 (a) State the name of a commercial breed of dairy cow.

_____ [1]

The table shows the daily milk production for a dairy cow from calving to 55 weeks after calving.

Time after calving /weeks	Milk production /litres per day
0	15
5	40
10	39
15	36
20	32
25	28
30	24
35	20
40	17
45	14
50	12
55	11

(b) (i) On the grid opposite, complete the graph by:

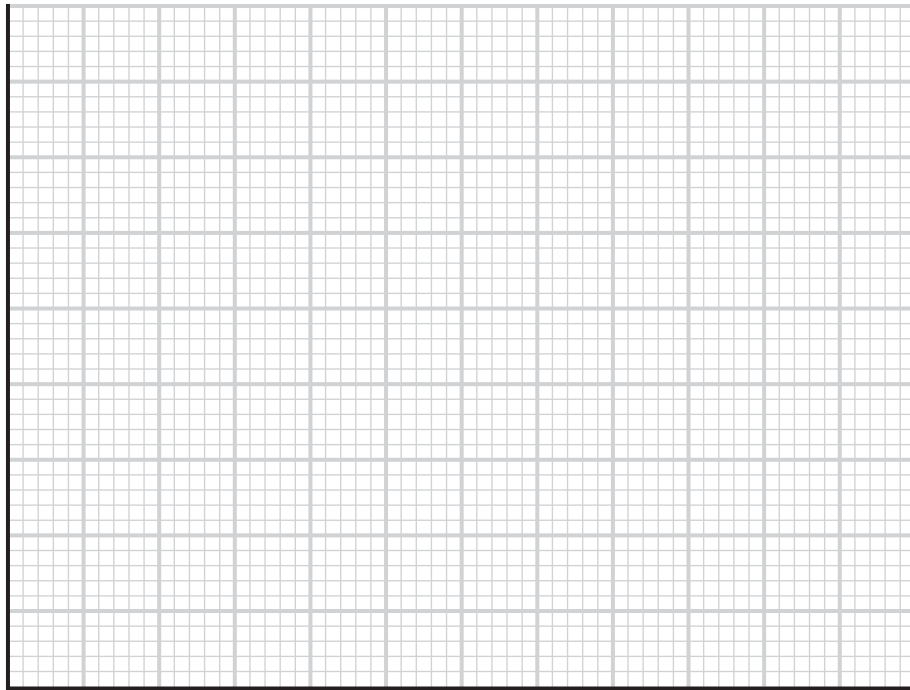
- choosing suitable scales
- plotting the data in the table
- drawing a **smooth** line graph

[6]





Milk production /litres per day



Time after calving /weeks

(ii) Complete the title of the graph below.

A graph to show the L _____ Curve for a dairy cow. [1]

(c) Describe and explain the trend shown by the graph. Use data in your answer.

[3]

[Turn over



- 6 Mixing slurry can be a dangerous task if the correct precautions are not put in place. The photograph below shows slurry being mixed.



Source: Chief Examiner

- (a) Describe **two** risks when mixing slurry.

1. _____

2. _____

_____ [2]



The photograph opposite shows some safety precautions being used when mixing slurry.

(b) Using the photograph and your knowledge, give **three** safety precautions that should be taken when mixing slurry.

1. _____

2. _____

3. _____

[3]

(c) State **one** technology used on tractors that allows for accurate application of slurry and fertilisers.

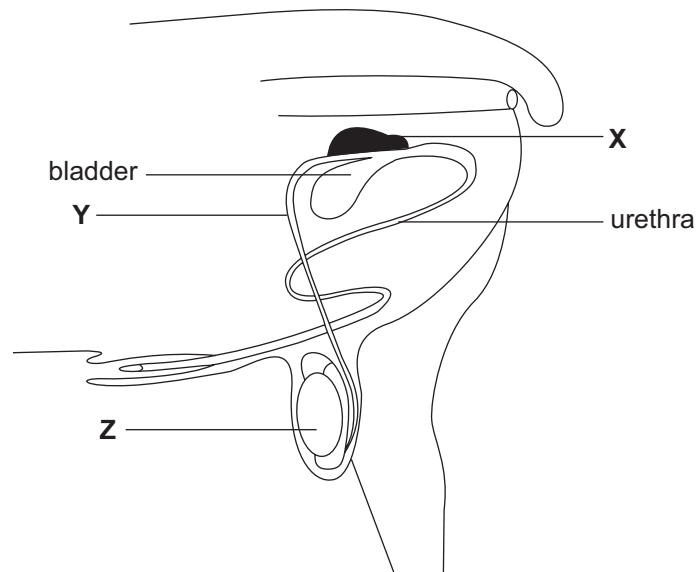
_____ [1]

[Turn over



- 8 A ewe (female sheep) can be mated from 7 months of age. Most commonly a ram (male sheep) is chosen and natural fertilisation is allowed to take place.

The diagram includes the main reproductive organs of a ram.



Source: CCEA

- (a) Name the parts labelled **X**, **Y** and **Z** in the diagram above.

X _____

Y _____

Z _____

[3]

- (b) Natural fertilisation is the most common method of fertilisation used on sheep farms as it helps to reduce costs.

Apart from reduced costs, give **two other** reasons why a farmer might choose natural fertilisation for their sheep.

[2]





A large rectangular area with a thick black border, containing 20 horizontal lines for writing.

14516

[Turn over



20GAU2117

[9]

THIS IS THE END OF THE QUESTION PAPER





BLANK PAGE

DO NOT WRITE ON THIS PAGE

14516



20GAU2119

DO NOT WRITE ON THIS PAGE

For Examiner's use only	
Question Number	Marks
1	
2	
3	
4	
5	
6	
7	
8	
9	

Total Marks	
--------------------	--

Examiner Number

Permission to reproduce all copyright material has been applied for.
In some cases, efforts to contact copyright holders may have been unsuccessful and CCEA will be happy to rectify any omissions of acknowledgement in future if notified.

GAU21/8
298429

